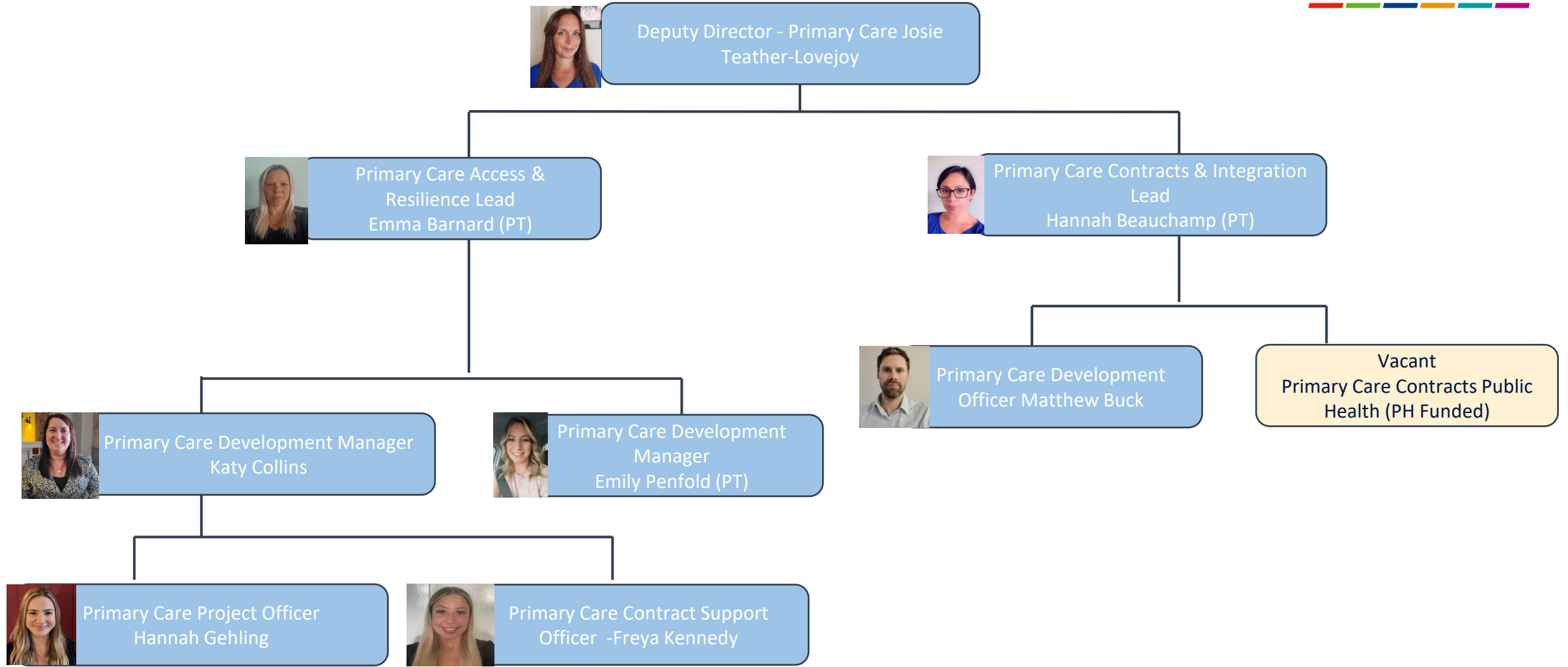


# Our Team



# Southampton Primary Care Team Roles and workstreams

Job Title	Name			Workstream	Area Covered
Deputy Director – Primary Care	Josie Teather-Lovejoy	07392272175 <a href="mailto:josie.teather-lovejoy@nhs.net">josie.teather-lovejoy@nhs.net</a>		Strategic Lead and budget holder	<b>All Areas across Southampton</b>
Primary Care Access & Resilience Lead	Emma Barnard	07341844650 <a href="mailto:ebarnard@nhs.net">ebarnard@nhs.net</a>		Workforce, GP Resilience, PCN DES Monitoring, Extended Access, PCN Workforce, OD Plans, PCN Managers Forum, Premises Improvement Grants, Digital and IT, CQRS, Demand and Capacity	<b>All Networks, Practice Resilience</b>
Primary Care Contracts & Integration Lead	Hannah Beauchamp	07900244856 <a href="mailto:h.beauchamp@nhs.net">h.beauchamp@nhs.net</a>		Core contracts, Local commissioning, Care Homes, Estates, Acute Visiting service, Core20Plus5, Health Inequalities, One Team	<b>All Networks/ Practices Contracting</b>
Primary Care Development Manager	Emily Penfold	07880172342 <a href="mailto:emily.penfold@nhs.net">emily.penfold@nhs.net</a>		Target, Practice Training, Practice Managers Forum, Practice Engagement, SAS contract, Cancer, SMI, CVD, Respiratory and BP@Home	<b>Bitterne PCN Woolston and Townhill PCN Living Well Partnership PCN</b>
Primary Care Development Manager	Katy Collins	07880 271692 <a href="mailto:katy.colins3@nhs.net">katy.colins3@nhs.net</a>		Practice Engagement, Winter Assurance, System Resilience, GP Tutorials, PPG, Resettlement Programme, LD, Tackling Health Inequalities, Social Prescribing	<b>West PCN North PCN Central PCN</b>
Primary Care Contracting Manager	Vacant Role Public Health Contracts	Vacant			<b>All areas across Southampton</b>
Primary Care Development Officer	Matthew Buck	MS Teams <a href="mailto:matthew.buck@nhs.net">matthew.buck@nhs.net</a>		Rent Reviews, Digital equipment, Population Health Management, APEX, Practice Data packs	<b>All Networks/ Practices/ Digital</b>
Primary Care Project Officer	Hannah Gehling	MS Teams <a href="mailto:hannah.gehling@nhs.net">hannah.gehling@nhs.net</a>		ARRS Workforce, GP Retention, Finances, Network Payments, Maternity/Paternity/Sickness, Boundaries and Maps, transformation & improvement (LD, SMI etc) project support, digital support	<b>Project support, Finance</b>
Primary Care Contract Support Officer	Freya Kennedy	MS Teams <a href="mailto:freya.kennedy@nhs.net">freya.kennedy@nhs.net</a>		Ad Hoc queries, Generic mailbox, meeting support, FYI Friday & Practice comms, contract support, Contract Queries,	<b>All Networks/ Practices</b>